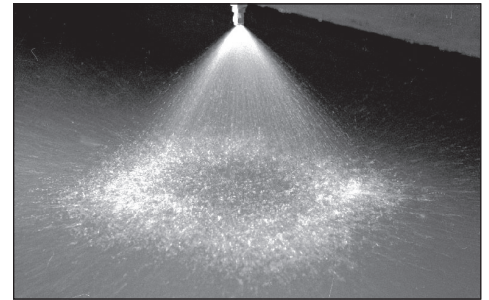
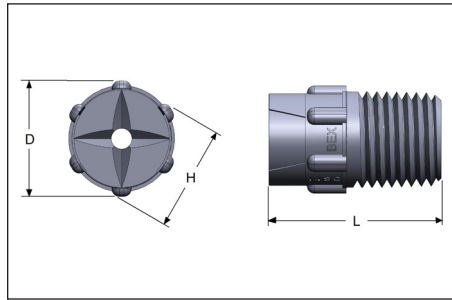
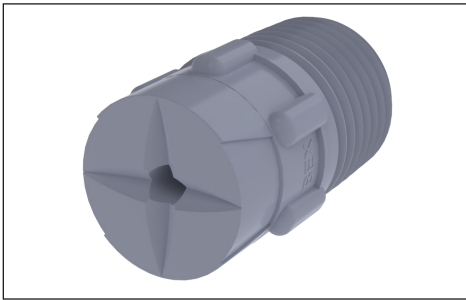




SQ MOLDED SERIES NOZZLES

FULL CONE • THREADED CONNECTION



SPRAY CHARACTERISTICS:

An approximately square spray pattern, with uniform distribution throughout the pattern. Spray Angle is approximately 60° at 10 PSI.

TYPICAL APPLICATIONS:

- Printed Circuit Board Washing
- PCB-Etching/Developing
- Semiconductor Manufacturing
- Carpet Cleaning
- Fruit and Vegetable Washing
- Plating Processes
- Dust Suppression
- Acid Spraying
- Degreasing
- Coating Applications
- Metal Washing

CONSTRUCTION:

Each BEX molded nozzle is designed with a series of "knobs" which makes them easier to finger tighten than a hex, especially when wet. The design feature of a small starter barrel greatly reduces the tendency to strip or cross-thread the nozzle during installation.

Nozzle Size	Dim 'A'	Dim 'B'	Dim 'L'
1/8SQ	0.62	9/16	0.81
1/4SQ	0.62	9/16	0.96
3/8SQ	0.77	11/16	1.10

All dimensions are in inches

MATERIALS AVAILABLE:

POLYPROPYLENE (LL) - (Green) Excellent chemical and corrosion resistance. Useful up to 175°F

NATURAL POLYPROPYLENE (LN)
Non-pigmented for optimum purity

PVDF (KK) - (Red) Excellent durability and abrasion resistance and is inert to most chemicals. Useful up to 300°F.

NATURAL PVDF (KN)
Non-pigmented for optimum purity.

Model ID	Max. Free Passage	Capacities at Various Pressures												Spray Angle		
		3 psi	5 psi	7 psi	10 psi	15 psi	20 psi	30 psi	40 psi	60 psi	80 psi	100 psi	150 psi	7 psi	20 psi	80 psi
1/8S3.6SQ	0.057	0.197	0.97	0.301	0.36	0.44	0.51	0.62	0.72	0.88	1.02	1.14	1.39	42	55	50
1/8S4.8SQ	0.033	0.263	0.34	0.40	0.48	0.59	0.68	0.83	0.96	1.18	1.36	1.52	1.86	50	65	60
1/8S6SQ	0.051	0.33	0.42	0.50	0.60	0.73	0.85	1.04	1.20	1.47	1.70	1.90	2.32	60	65	60
1/4S6SQ	0.051	0.33	0.42	0.50	0.60	0.73	0.85	1.04	1.20	1.47	1.70	1.90	2.32	60	65	60
1/4S10SQ	0.064	0.55	0.71	0.84	1.00	1.22	1.41	1.73	2.00	2.45	2.83	3.2	3.9	61	67	60
1/4S12SQ	0.064	0.66	0.85	1.00	1.20	1.47	1.70	2.08	2.40	2.94	3.4	3.8	4.6	71	76	69
1/4S14SQ	0.091	0.77	0.99	1.17	1.40	1.71	1.98	2.42	2.80	3.4	4.0	4.4	5.4	78	85	75

