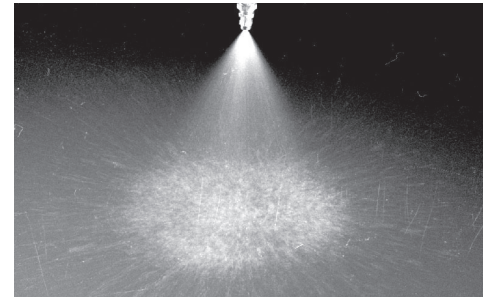
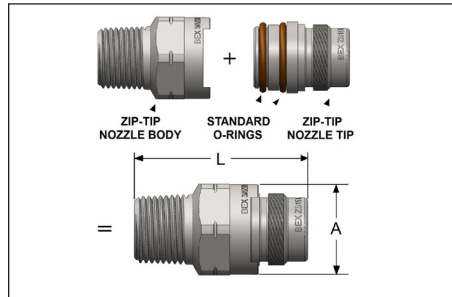
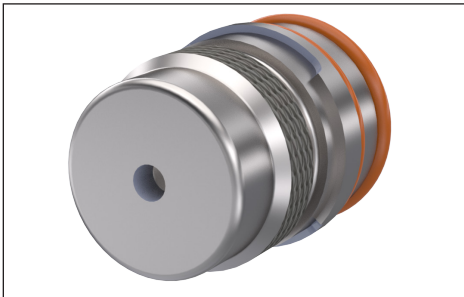




# ZS SPRAY NOZZLE SPECIFICATIONS

FULL CONE • ZIP-TIP CONNECTION • ONE-PIECE CONSTRUCTION



## SPRAY CHARACTERISTICS:

Full cone spray pattern, with uniform distribution throughout the cone.

## TYPICAL APPLICATIONS:

- Chemical Processing
- Cooling Sprays
- Foam Breaking
- Continuous Casting

U.S. Patent No. 4, 142, 682

Canadian Patent No. 1, 050, 589

## CONSTRUCTION:

The nozzle contains a patented insert with larger flow passages than older styles and is less susceptible to clogging. Standard materials are brass, 303 stainless steel, and 316 stainless steel. Some models are also stocked in PVC, CPVC and polypropylene.

NOZZLE PIPE SIZE	Length 'L' (in)	Dim. 'A' (in)
1/8ZS	1.60	0.97
1/4ZS	1.70	0.97
3/8ZS	1.73	0.97
1/2ZS	1.80	0.97
1/2ZLS	2.11	1.25
3/4ZLS	2.19	1.25

Model (in)	Capacity												Spray Angle		
	3 gal	5 gal	7 gal	10 gal	15 gal	20 gal	30 gal	40 gal	60 gal	80 gal	100 gal	150 gal	7 gal	20 gal	30 gal
ZS1	0.055	0.071	0.084	0.100	0.122	0.141	0.173	0.200	0.245	0.283	0.32	0.39	--	55	52
ZS1.5	0.082	0.106	0.126	0.150	0.184	0.212	0.260	0.300	0.37	0.42	0.47	0.58	--	65	57
ZS2	0.110	0.141	0.167	0.200	0.245	0.283	0.35	0.40	0.49	0.57	0.63	0.77	54	59	60
ZS3	0.164	0.212	0.251	0.300	0.37	0.42	0.52	0.60	0.73	0.85	0.95	1.16	50	53	60
ZS3.5	0.192	0.248	0.293	0.35	0.43	0.50	0.61	0.70	0.86	0.99	1.11	1.36	48	58	61
ZS5	0.274	0.35	0.42	0.50	0.61	0.71	0.87	1.00	1.22	1.41	1.58	1.94	60	75	70
ZS6	0.33	0.42	0.50	0.60	0.73	0.85	1.04	1.20	1.47	1.70	1.90	2.32	67	72	70
ZS6.5	0.36	0.46	0.54	0.65	0.80	0.92	1.13	1.30	1.59	1.84	2.06	2.52	48	56	70
ZS7.5	0.41	0.53	0.63	0.75	0.92	1.06	1.30	1.50	1.84	2.12	2.37	2.90	55	65	48
ZS8.5	0.47	0.60	0.71	0.85	1.04	1.20	1.47	1.70	2.08	2.40	2.69	3.3	58	65	63
ZS10	0.55	0.71	0.84	1.00	1.22	1.41	1.73	2.00	2.45	2.83	3.2	3.9	60	65	62
ZS14	0.77	0.99	1.17	1.40	1.71	1.98	2.42	2.80	3.4	4.0	4.4	5.4	78	85	75
ZS15	0.82	1.06	1.26	1.50	1.84	2.12	2.60	3.00	3.7	4.2	4.7	5.8	63	65	60
ZS18	0.99	1.27	1.51	1.80	2.20	2.55	3.12	3.6	4.4	5.1	5.7	7.0	85	88	76
ZS20	1.10	1.41	1.67	2.00	2.45	2.83	3.5	4.0	4.9	5.7	6.3	7.7	76	82	75
ZS22	1.20	1.56	1.84	2.20	2.69	3.11	3.8	4.4	5.4	6.2	7.0	8.5	76	78	76
ZLS16	0.88	1.13	1.34	1.60	1.96	2.26	2.77	3.2	3.9	4.5	5.1	6.2	55	60	55
ZLS25	1.37	1.77	2.09	2.50	3.06	3.5	4.3	5.0	6.1	7.1	7.9	9.7	68	73	65
ZLS32	1.75	2.26	2.68	3.2	3.9	4.5	5.5	6.4	7.8	9.1	10.1	12.4	80	90	75
ZLS40	2.19	2.83	3.3	4.0	4.9	5.7	6.9	8.0	9.8	11.3	12.6	15.5	86	90	81

