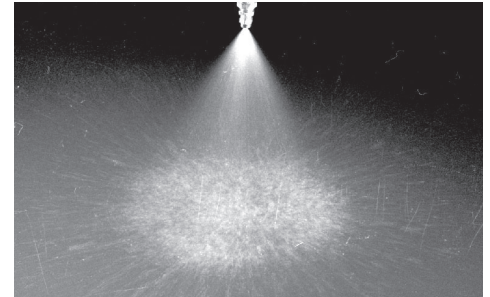
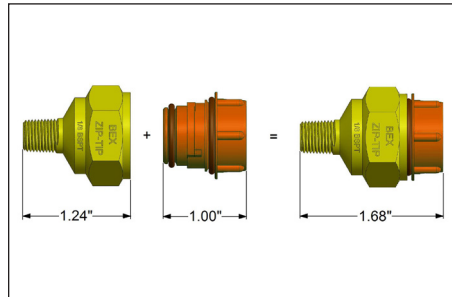
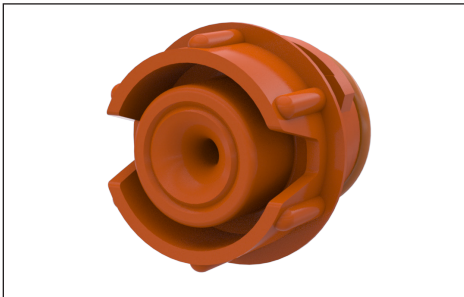




# ZSW MOLDED SPRAY NOZZLE

FULL CONE SPRAY • ZIP-TIP CONNECTION



Spray angle not exactly as shown

## SPRAY CHARACTERISTICS:

A wide full cone spray pattern, with uniform distribution throughout the cone.

## CONSTRUCTION:

Z-Body connection sizes are available in NPT and BSPT thread sizes of 1/8", 1/4", 3/8", and 1/2". Metal and molded plastic ZIP-TIP components are not interchangeable. Zip-Tips can be ordered as complete assemblies, or as replacement tips only.



ZSW Zip-Tips are available with finger Tabz for easy insertion and removal

## MATERIALS AVAILABLE:

**POLYOROPYLENE (LL) - (Green)**  
Excellent chemical and corrosion resistance. Useful up to 175°F

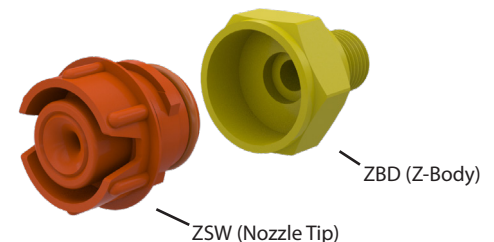
**NATURAL POLYPROPYLENE (LN)** Non-pigmented for optimum purity

**PVDF (KK) - (Red)** Excellent durability and abrasion resistance and is inert to most chemicals. Useful up to 300°F.

**NATURAL PVDF (KN)**  
Non-pigmented for optimum purity.

## TYPICAL APPLICATIONS:

- Chemical Processing
- Cooling Sprays
- Continuous Casting



Model ID	Max. Free Passage	Capacities at Various Pressures												Spray Angle		
		0.2 bar	0.3 bar	0.5 bar	0.7 bar	1.0 bar	1.5 bar	2 bar	3 bar	4 bar	5 bar	6 bar	9 bar	0.5 bar	1.4 bar	5.5 bar
ZS2.8W	1.30	0.57	0.70	0.90	1.07	1.28	1.56	1.80	2.21	2.55	2.85	3.13	3.8	110	105	96
ZS4.3W	1.30	0.88	1.07	1.39	1.64	1.96	2.40	2.77	3.4	3.9	4.4	4.8	5.9	117	108	100
ZS5.6W	1.63	0.94	1.15	1.48	1.75	2.10	2.57	2.96	3.6	4.2	4.7	5.1	6.3	117	110	100
ZS8W	2.06	1.63	2.00	2.58	3.05	3.6	4.5	5.2	6.3	7.3	8.2	8.9	10.9	118	110	103
ZS10W	2.31	2.04	2.50	3.2	3.8	4.6	5.6	6.4	7.9	9.1	10.2	11.2	13.7	118	108	102
ZS12W	2.31	2.45	3.00	3.9	4.6	5.5	6.7	7.7	9.5	10.9	12.2	13.4	16.4	120	112	102
ZS14W	2.31	2.85	3.5	4.5	5.3	6.4	7.8	9.0	11.1	12.8	14.3	15.6	19.1	118	114	104
ZS17W	2.59	3.5	4.2	5.5	6.5	7.7	9.5	11.0	13.4	15.5	17.3	19.0	23.2	118	117	102
ZS20W	2.59	4.1	5.0	6.4	7.6	9.1	11.2	12.9	15.8	18.2	20.4	22.3	27.3	120	120	106
ZS24W	2.59	4.9	6.0	7.7	9.2	10.9	13.4	15.5	18.9	21.9	24.5	26.8	33	122	118	106

