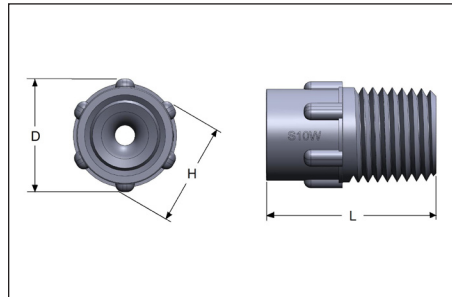
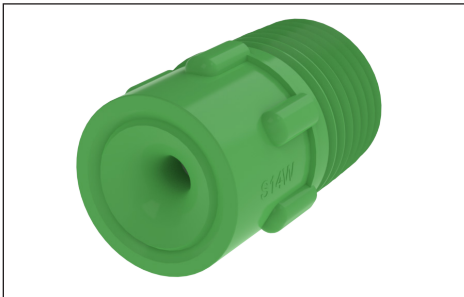




SW MOLDED SPRAY NOZZLES

FULL CONE • THREADED CONNECTION



SPRAY CHARACTERISTICS:

A wide angle full cone spray pattern, with uniform distribution throughout the cone. Spray angle is approximately 110°-120° at 10PSI.

TYPICAL APPLICATIONS:

- Printed Circuit Board Washing
- PCB-Etching/Developing
- Semiconductor Manufacturing
- Carpet Cleaning
- Fruit and Vegetable Washing
- Plating Processes
- Dust Suppression
- Acid Spraying
- Degreasing
- Coating Applications
- Metal Washing

CONSTRUCTION:

Each BEX molded nozzle is designed with a series of "knobs" which makes them easier to finger tighten than a hex, especially when wet. The design feature of a small starter barrel greatly reduces the tendency to strip or cross-thread the nozzle during installation.

Nozzle Size	Dim 'A'	Dim 'B'	Dim 'L'
1/8SW	0.62	9/16	0.81
1/4SW	0.62	9/16	0.96
3/8SW	0.77	11/16	1.10

All dimensions are in inches

MATERIALS AVAILABLE:

POLYPROPYLENE (LL) - (Green)
Excellent chemical and corrosion resistance. Useful up to 175°F

NATURAL POLYPROPYLENE (LN) Non-pigmented for optimum purity

PVDF (KK) - (Red) Excellent durability and abrasion resistance and is inert to most chemicals. Useful up to 300°F.

NATURAL PVDF (KN)
Non-pigmented for optimum purity.

Model ID	Max. Free Passage	Capacities at Various Pressures												Spray Angle		
		0.2 bar	0.3 bar	0.5 bar	0.7 bar	1.0 bar	1.5 bar	2 bar	3 bar	4 bar	5 bar	6 bar	9 bar	0.5 bar	1.4 bar	5.5 bar
1/8S2.8W	1.30	0.57	0.70	0.90	1.07	1.28	1.56	1.80	2.21	2.55	2.85	3.13	3.8	110	105	96
1/8S4.3W	1.30	0.88	1.07	1.39	1.64	1.96	2.40	2.77	3.4	3.9	4.4	4.8	5.9	117	108	100
1/8S5.6W	1.63	1.14	1.40	1.80	2.14	2.55	3.13	3.6	4.4	5.1	5.7	6.3	7.7	117	110	100
1/4S5.6W	1.63	1.14	1.40	1.80	2.14	2.55	3.13	3.6	4.4	5.1	5.7	6.3	7.7	120	108	102
1/8S8W	2.06	1.63	2.00	2.58	3.05	3.6	4.5	5.2	6.3	7.3	8.2	8.9	10.9	118	110	103
1/4S10W	2.31	2.04	2.50	3.2	3.8	4.6	5.6	6.4	7.9	9.1	10.2	11.2	13.7	118	108	102
1/4S12W	2.31	2.45	3.00	3.9	4.6	5.5	6.7	7.7	9.5	10.9	12.2	13.4	16.4	120	112	102
1/4S14W	2.31	2.85	3.5	4.5	5.3	6.4	7.8	9.0	11.1	12.8	14.3	15.6	19.1	118	114	104

* TABLE CONTINUES ON FOLLOWING PAGE



SW-MOLDED NOZZLE SPECIFICATIONS
FULL CONE SPRAY • THREADED CONNECTION

www.BEX.com