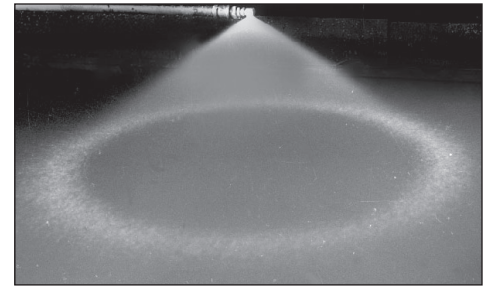
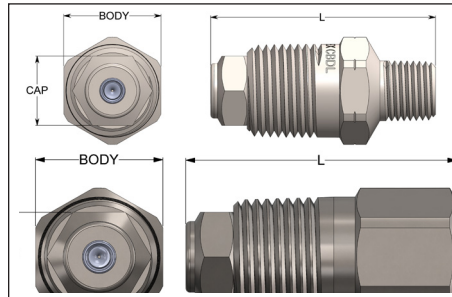




CWM.5L SERIES SPRAY NOZZLES

HOLLOW CONE • THREADED CONNECTION



SPRAY CHARACTERISTICS:

CWM.5L series hydraulic atomizing nozzles are designed and precision machined to provide a very fine hollow-cone spray using only the liquid pressure for atomizing. Easy disassembly/assembly and cleaning. Standard spray angle is 150° at 40 PSI.

CONSTRUCTION:

1/2" male wall mount body with removable cap, orifice insert, core, core retainer and strainer. The orifice, insert, core, and strainer are supplied in 316 stainless steel standard.

TYPICAL APPLICATIONS:

- Humidification/Moisture Addition
- Evaporative Cooling
- Steam De-superheating

Model Number	"L"	BODY	CAP
1/4FCWM.5L	1 7/8	13/16 HEX	5/8 HEX
1/4CWM.5L	2 1/32	13/16 HEX	5/8 HEX



Model #		Capacities at Various Pressures LPH								
Female	Male	2 bar	3 bar	4 bar	5 bar	7 bar	10 bar	20 bar	30 bar	50 bar
1/4FC5.9M1/2WL	1/4C5.9WM1/2L	5.9	7.2	8.3	9.3	11.0	13.2	18.7	22.9	29.5
1/4FC7.4M1/2WL	1/4C7.4WM1/2L	7.4	9.1	10.5	11.7	13.8	16.5	23.4	28.7	37
1/4FC9.2M1/2WL	1/4C9.2WM1/2L	9.2	11.3	13.0	14.5	17.2	20.6	29.1	36	46
1/4FC12M1/2WL	1/4C12WM1/2L	12.0	14.7	17.0	19.0	22.4	26.8	38	46	60
1/4FC14M1/2WL	1/4C14WM1/2L	14.0	17.1	19.8	22.1	26.2	31.3	44	54	70
1/4FC18M1/2WL	1/4C18WM1/2L	18.0	22.0	25.5	28.5	34	40	57	70	90
1/4FC23M1/2WL	1/4C23WM1/2L	23.0	28.2	33	36	43	51	73	89	115
1/4FC28M1/2WL	1/4C28WM1/2L	28.0	34	40	44	52	63	89	108	140

