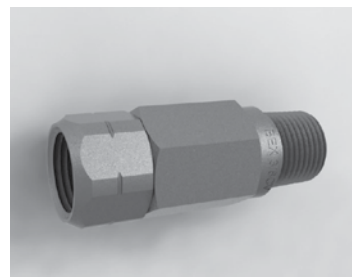




CV CHECK VALVES

Check Valves



TYPICAL APPLICATIONS:

Check valves are used in line with many spray nozzles when the application requires the complete shut-off of flow while maintaining full line pressure. The spring loaded ball-type design provides a drip-free seal with shut-off pressures of 5, 10 and 20 psi.

CONSTRUCTION:

The unit consists of a two-piece body, an internal spring and a shut-off stainless steel ball. Available in 1/8", 1/4", 3/8" and 1/2" NPT sizes. Standard materials are brass, 303SS and 316SS.

Model	Length (in)	Shut-Off Pressure (psi)
1/8"CV5	1.81	5
1/8"CV10	1.81	10
1/8"CV20	1.81	20
1/4"CV5	2.31	5
1/4"CV10	2.31	10
1/4"CV20	2.31	20
3/8"CV5	2.31	5
3/8"CV10	2.31	10
3/8"CV20	2.31	20
1/2"CV5	3.50	5
1/2"CV10	3.50	10
1/2"CV20	3.50	20